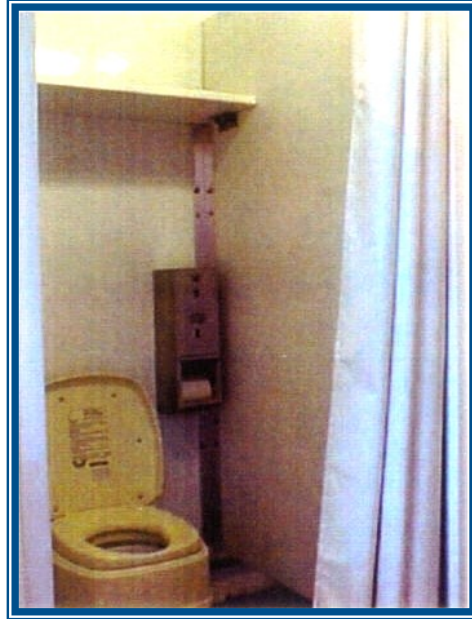
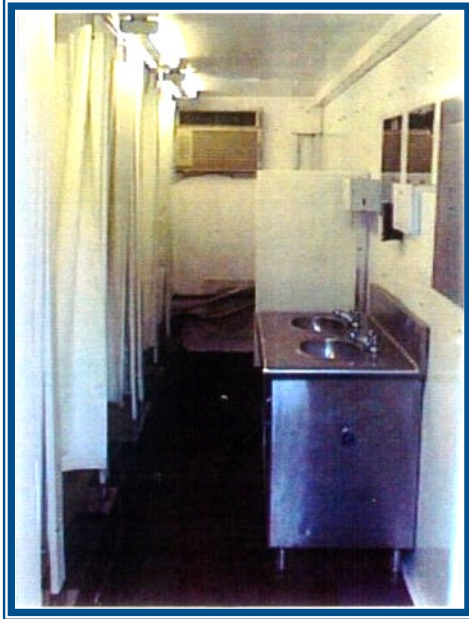


# Containerized Latrine System (CSS)

## NSN 4510-01-477-7764



*Provides improved capability in field-expedient latrines.  
Supports up to 150 personnel.*

- ❖ ISO Container (8' x 8' x 20')
- ❖ Six low-water flush toilets with privacy stalls
- ❖ One trough urinal
- ❖ Two waste collection tanks
- ❖ Two sinks with running hot/cold water
- ❖ One 6-gallon hot water heater
- ❖ Mirrors, dispensers for toilet paper, paper towels and soap
- ❖ 60 cycle generator powered with shore option
- ❖ Privacy stalls with hooks and shelves to accommodate the soldier's equipment
- ❖ 33,000 Btu Environmental Control Unit
- ❖ Fan on the front wall provides ventilation
- ❖ Waste is contained in a well-ventilated internal storage tank
- ❖ Operates from -15°F to 120°F
- ❖ System is easily set up within 45 minutes
- ❖ C130 Transportable



**Engineered Solutions LLC**

2740 South Highway 1651  
Stearns, KY 42647-6209  
606-376-5021 [www.outdoorventure.com](http://www.outdoorventure.com)

2015-05